



GATEWAY ENOCEAN to BACnet MS/TP

EO-BAC

EO-BAC is a bidirectional gateway that collects data from EnOcean wireless elements, stores their values in BACnet objects and sends them via BACnet communication to the control system. In the opposite direction, the gateway receives commands from control system in order to control these elements.

ENOCEAN is a set of technologies that enables the use of wireless and battery-free elements.

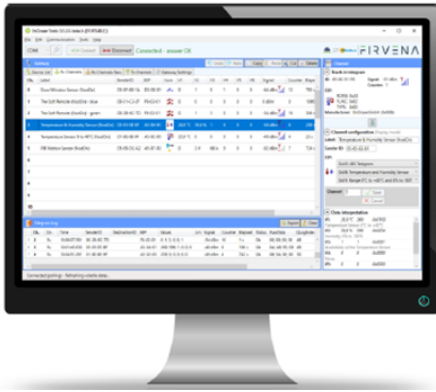
BACNET PROTOCOL is simple to implement and widely used in building automation systems.

- bidirectional communication
- open product for different EnOcean elements and manufacturers
- hiding unused data points in the BACnet network
- conversion of RAW data to specific values
- EMC tests for residential building and industrial environments
- simple installation in the suspended ceilings of buildings
- available in 868 MHz, optional in 902 MHz
- clear administration via EO-BAC Tool application
- repeater function
- antenna exchangeable for another type
- powering in the range 10-32 V DC, 24 V AC

-  wireless
-  battery-free
-  energy harvesting
-  environmentally protective



ENOCEAN TOOLS SOFTWARE



The **EO-BAC Tool application** is used to configure the gateway. The main purpose is to intuitively and simply manage EnOcean devices connected to gateway. The application is also useful verification tool whereby you can evaluate whether your system works well. It allows to see the states, measured quantities, communication intervals or signal strength of connected elements. The application allows settings of BACnet configuration parameters such as MSTP address, baud rate, etc.

ANTENNA OPTIONS

The strength and coverage of the signal is appropriately distributed according to the choice of antenna. For common locations, the mounted antenna is adequate.

For spaces with a higher attenuation of signal (e.g. in metal control cabinet) and for better gain properties, we recommend use of **external antenna** with a 2 m long cable and magnetic base.



TECHNICAL DATA

CATEGORY	PARAMETER	VALUE
Product	Product name	EO-BAC
	Product title	EnOcean to BACnet MS/TP Gateway
	Product ID	7.1
	Vendor name	FIRVENA s.r.o.
Electrical data	Rated supply voltage	24 V DC
	Supply voltage range	10–32 V DC
	Rated input current	50 mA/24V
	Rated input power	1.2 W/24V
RS 485 (BACnet MS/TP)	Baud rate	9.6, 19.2, 38.4, 57.6, 76.8 or 115.2 kBd
	Data bits	8
	Stopbits	1
	Parity	None
	Maximum number of devices on the line	32
	Termination	Manually activated 120 Ω resistor
EnOcean	Frequency	868 MHz
	Maximum number of handled devices	40 (max. 20 with SmartACK)
	Repeater	✓
USB	Device class	Custom HID or Mass Storage
	Connector	Type B
Operating conditions	IP Code	IP20
	Operating temperature	–20 to +70 °C
	Relative humidity	max. 80 %
Dimensions in mm	Dimensions without antenna	Width=126, Height=71, Depth=25
Weight	Weight without antenna	115 g
Box material		ABS, white

FIRVENA



FIRVENA s.r.o.
Zamecke namesti 26
738 01 Frydek-Mistek
Czech Republic



+420 777 879 762
+420 558 111 253



firvena@firvena.cz



www.firvena.com